



1. Follow the wire from the stepper motor that controls the tilt to the motor controller (Figure 2). Connect the micro-USB to the motor controller.
2. On the Tic Control Center, click on the dropdown on the top left of the window and select something like #01234567 T825.

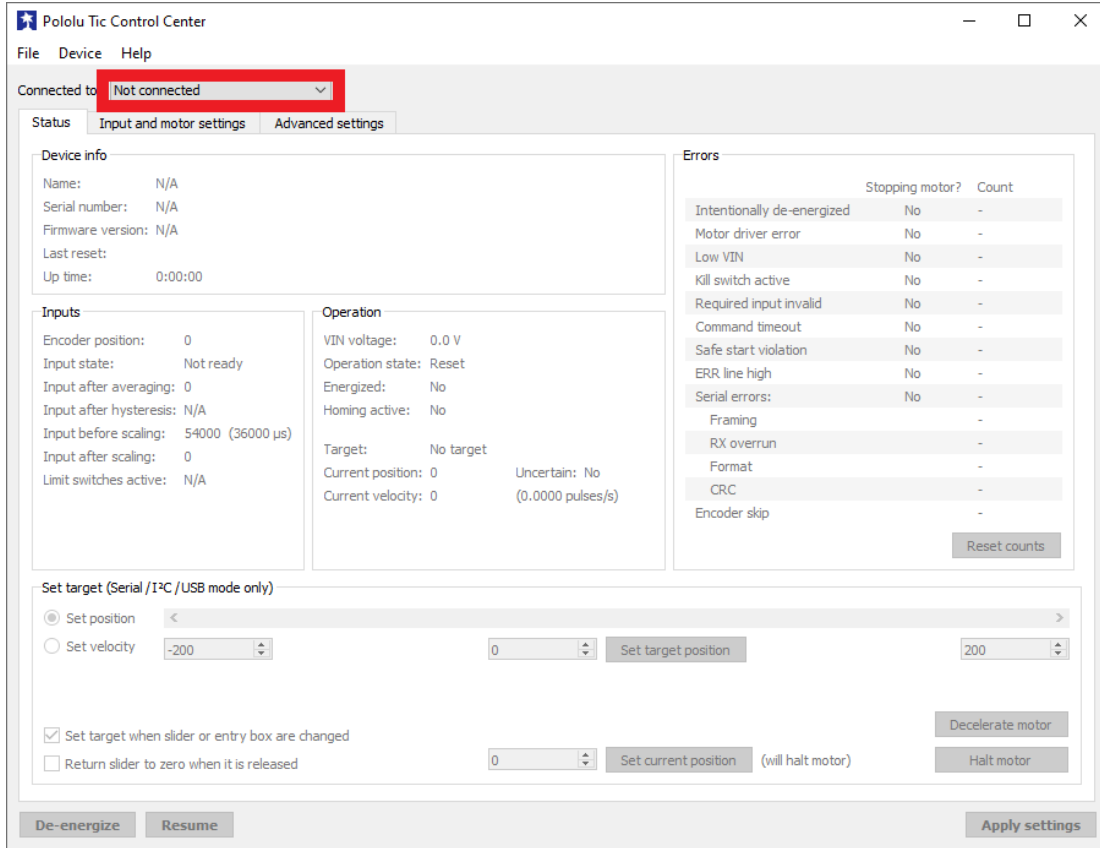


Figure 2 Pololu Tic Center

3. Click on File on the top right of the window and then select Open settings file... and select the Tilt configuration. Click Apply settings at the bottom of the window.

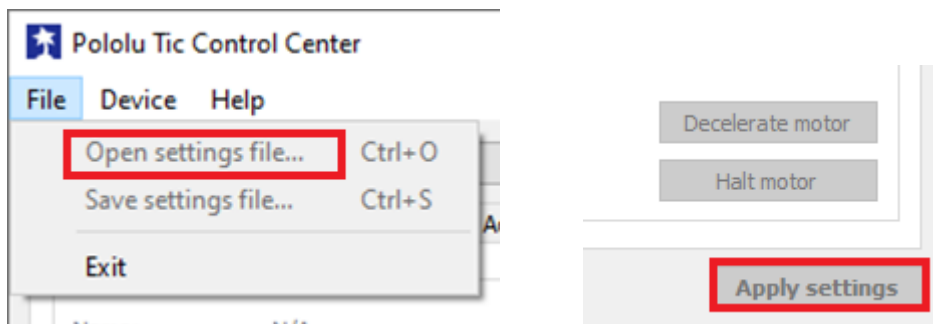


Figure 3 "Open settings file..." option and Apply settings button

4. Repeat for the pan motor.